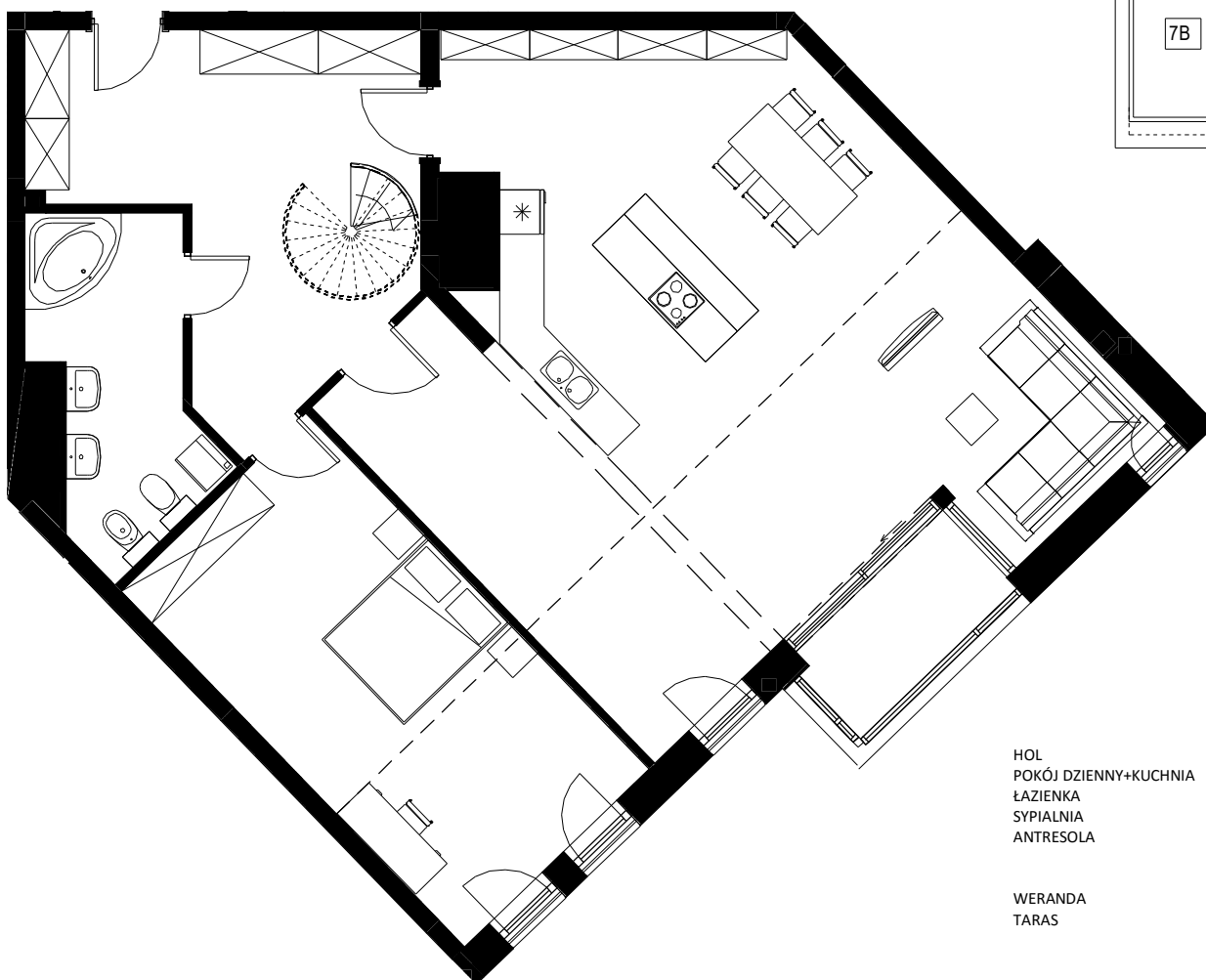
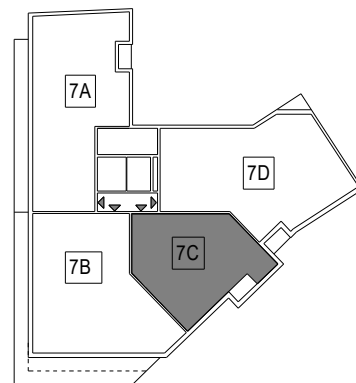
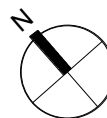
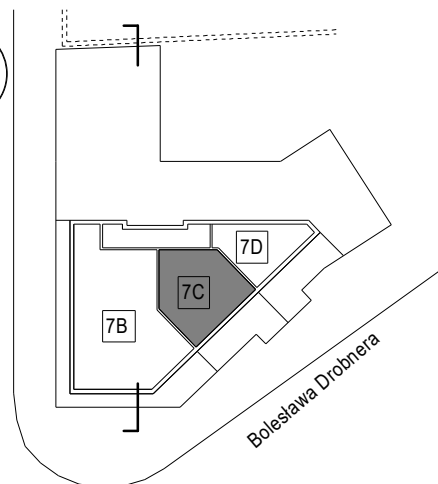


Jedności Narodowej



HOL	19,97 m2
POKÓJ DZIENNY+KUCHNIA	64,38 m2
ŁAZIENKA	8,69 m2
SYPIALNIA	23,49 m2
ANTRESOLA	62,28 m2
	178,81 m2

WERANDA	4,04 m2
TARAS	24,01 m2

INWESTOR:

PROJEKT:



WPBM "MÓJ DOM" S.A.



AUTORSKA PRACOWNIA PROJEKTOWA KONARZEWSKI
 www.konarzewski.net, konarzewski@o2.pl, tel/fax 71 78 55 054